

2/H-83 (v) (Syllabus-2015)

2 0 1 7

(April)

MUSIC

(Elective)

(History of Indian Classical Music—I)

[MUS (H)-202]

Marks : 38

Time : 2 hours

*The figures in the margin indicate full marks
for the questions*

Answer one question from each Unit

UNIT—I

- 1. Give a brief account of the evolution of Indian music in the Vedic period.** 10
- 2. Bring out the differences and similarities between Laya and Tala.** 10

(2)

UNIT—II

3. Define Tala and notate the chota khayal of Raag Malkauns focussing on Aroha, Avoroha and Pakad. 10
4. Give the tala notations of the following : 10
- (a) Ektaal
- (b) Jhaptaal

UNIT—III

5. What is Raga-Ragini system? Why did it become obsolete in later period? 7+3=10
6. Define Tarana. Describe the main features of Tarana. 10

UNIT—IV

7. Make a comparison between Hindustani and Carnatic systems. 8
8. Point out the similarities and differences of the Ghana Vadya and Sushir Vadya. 8

2/E-83 (vi) (Syllabus-2015)

2017

(April)

MUSIC

(Elective)

(Tonic Sol-fa Notation)

[MUS (E)-203]

Marks : 38

Time : 2 hours.

The figures in the margin indicate full marks for the questions

Answer any **one** question from each Unit—I and Unit—II and any **two** questions from Unit—III

UNIT—I

1. Define Pulse. Explain the different types of pulse with examples. 2+10=12
2. Write an 8 bar melody in 3 pulse beat including quarter pulse, three-quarter pulse, silences and continuation. Mention the tune names of the composed melody. 8+4=12

(2)

UNIT—II

3. Construct the chromatic scales both ascending and descending starting from soh (s) and ray (r). Also write down four differences between chromatic scale and diatonic major scale. $8+4=12$
4. Explain the different pulse beat divisions of tonic sol-fa notation. $2 \times 6 = 12$

UNIT—III

5. Write a 6 bar melody using the triads d, m and s in the key of C. Also write down the tempo of the composed music. $6+1=7$
6. Name the intervals of the following notes : $1 \times 7 = 7$
- (a) m-s
 - (b) f-le
 - (c) d-f
 - (d) s₁-d
 - (e) r-fe
 - (f) t-d'
 - (g) d-d'

D72/1425

(Continued)

(3)

7. Write short notes on the following : $3+2+2=7$

- (a) Key tone
- (b) Measure
- (c) DC

D72—100/1425

2/E-83 (vi) (Syllabus-2015)

2/E-83 (iv) (Syllabus-2015)

2 0 1 7

(April)

MUSIC

(Elective)

(Information Technology)

[MUS (E)-201]

Marks : 30

Time : 2 hours

*The figures in the margin indicate full marks
for the questions*

UNIT—I

Answer any one question :

5

- 1. (a) List the steps to restore files or folders
from Recycle Bin.**

2

- (b) What is the difference between moving
and copying a file or a folder from a
location to another?**

2

- (c) Explain OLE.**

1

(2)

2. (a) What do you understand by (a) file,
(b) folder and (c) drive? $1 \times 3 = 3$
- (b) Explain Restoring Windows. 2

UNIT—II

Answer any three questions :

$5 \times 3 = 15$

3. (a) Explain the differences between the following pairs : $1 \frac{1}{2} \times 2 = 3$
- (i) Save and Save As
- (ii) File Close and File Exit
- (b) What is a file extension? Write at least four file extensions. 2
4. (a) Write shortcuts of the following : 2
- Align left ; Align right ; Align centre ; Align justified.
- (b) Explain insertion mode or overwrite mode. 3
5. (a) Explain the difference between Widow and Orphan in MS Word. 2
- (b) Explain the steps of creating a table in MS Word. 2
- (c) Name some functions that can be used on a table in MS Word. 1

D72/1424

(Continued)

(3)

6. (a) What do you mean by Tab Stops? Explain. 3
- (b) What are the various measurement units in MS Word? 2
7. (a) Define Mail Merge. 1
- (b) Why is there a need of performing sorting and filtering in Mail Merge? 2
- (c) What is a merged document? What are the components needed to create a merged document? 2
8. (a) Explain the steps to create a table of content. 3
- (b) What do you understand by Bookmarks and Hyperlinks in MS Word? 2

UNIT—III

Answer any two questions : $5 \times 2 = 10$

9. (a) Draw the block diagram of a computer. 3
- (b) Explain any two units of the block diagram. 2
10. (a) Explain input and output devices with examples. 3
- (b) Explain primary and secondary memory. 2

D72/1424

(Turn Over)

11. (a) Name the units that form the CPU. Explain any one of them. 3
- (b) Explain the types of printer. 2
12. Define any *five* of the following : $1 \times 5 = 5$
- (a) Bit
 - (b) Nibble
 - (c) Byte
 - (d) MB
 - (e) GB
 - (f) TB
 - (g) UPS

2017

(April)

MUSIC

(Elective)

(**Advanced Theory of Western Music**)

[MUS (E)-402]

Marks : 38

Time : 2 hours

The figures in the margin indicate full marks for the questions

Answer **one** question each from Units I and II
and **two** questions from Unit—III

UNIT—I

1. What does the term 'ornaments' imply in musical language? What is the working of an Acciaccatura? Explain the use of Appoggiatura. 4+4+4=12
2. Explain the concept of 'range of musical instruments' with proper diagrams. Illustrate the range of classical guitar, violin, viola and flute. 4+8=12

(Turn Over)

(2)

UNIT—II

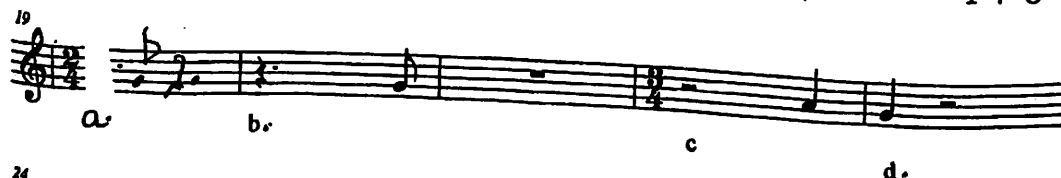
3. In C major scale, construct triads as indicated below : $2 \times 6 = 12$



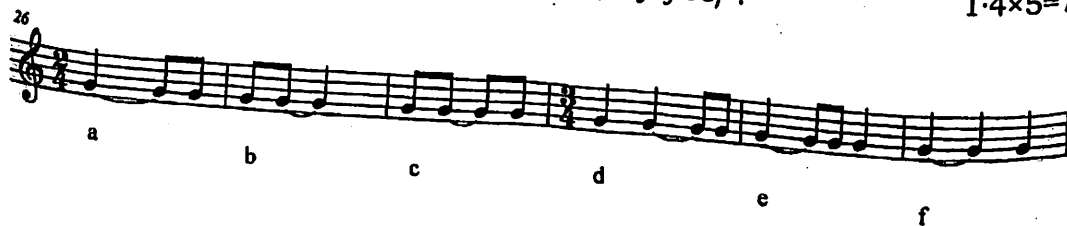
4. What does the term 'voice range' mean? Indicate the voice ranges of Soprano, Alto, Tenor and Bass. Would this be recommended for North-East singers? $4+4+4=12$

UNIT—III

5. Add correct rest symbols to the following (any five) : $1 \cdot 4 \times 5 = 7$



6. Group correctly the following notes (any five) : $1 \cdot 4 \times 5 = 7$



(3)

7. Add time-signatures to the following (any five) :

$$1 \cdot 4 \times 5 = 7$$