

**4/E-83 (x) (Syllabus-2015)**

**2 0 2 1**

( July )

MUSIC

( Elective )

**( Advanced Theory of Western Music )**

[ MUS (E)-402 ]

*Marks : 38*

*Time : 2 hours*

*The figures in the margin indicate full marks for the questions*

Answer **one** question each from Units I and II  
and **two** questions from Unit—III

UNIT—I

1. What are the various ornaments of music? Briefly explain the musical meaning of Acciaccature, Appoggiatura and Mordents with appropriate examples. 2+3+3+4=12
2. What will happen if the 2nd, 3rd, 4th, 6th and 7th notes are transposed? Does a major chord remain a major even after it is transposed? 6+6=12

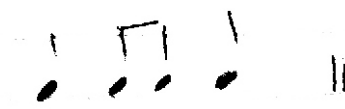
( 2 )

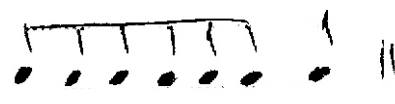
UNIT—II

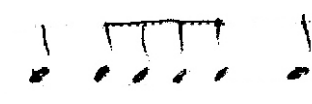
3. How many semitones do perfect 4th, 3rd and 6th tones contain? Is there any exceptions?  $8+4=12$
4. How intervals changed when raised or lowered? Illustrate your answer with suitable examples.  $6+6=12$

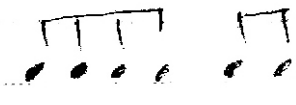
UNIT—III

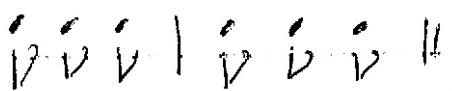
5. Beam correctly the notes together (any *five*) :  $1 \cdot 4 \times 5 = 7$


(a)  $\frac{3}{8}$  

(b)  $\frac{2}{2}$  

(c)  $\frac{4}{4}$  

(d)  $\frac{6}{8}$  

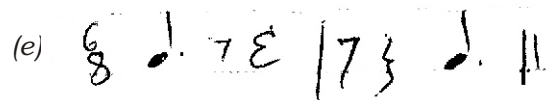
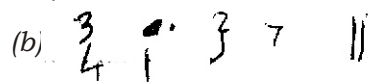
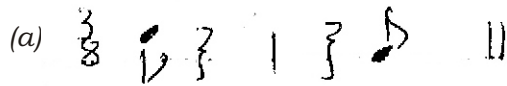
(e)  $\frac{3}{8}$  

(f)  $\frac{4}{4}$  

( 3 )

6. Add correct standard rest symbols (any *five*) :

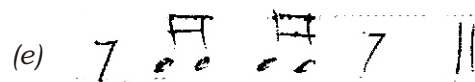
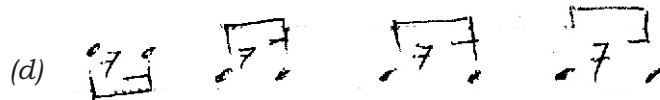
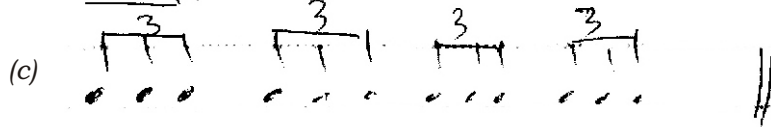
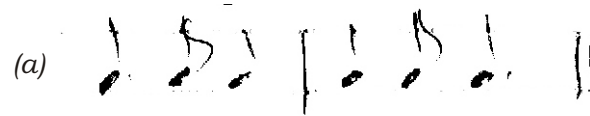
1.4×5=7



( 4 )

7. Add time signatures to the following (any *five*) :

1·4×5=7



\*\*\*