

4/E-83 (xi) (Syllabus-2015)

2018

(April)

MUSIC

(Elective)

(Sound of Music)

[MUS (E)-403]

Marks : 38

Time : 2 hours

*The figures in the margin indicate full marks
for the questions*

Answer **four** questions, selecting **one** from each Unit

UNIT—I

1. What is sound and how is it propagated?
Explain the dual nature of sound with
examples. What are the various characteristics of sound? $2+3+4\frac{1}{2}=9\frac{1}{2}$
2. What are the various types of noises?
Describe the different types of acoustic
properties of sound. $4+5\frac{1}{2}=9\frac{1}{2}$

D/1812

(Turn Over)

(2)

UNIT—II

3. What is a microphone? Mention the different types of microphones and their polar patterns. $4+5\frac{1}{2}=9$
4. Explain the working of a human ear with the help of a neat diagram. 9

UNIT—III

5. What are balanced and unbalanced connections? Illustrate with the help of a diagram the different types of analog and digital cable connectors. $4+5\frac{1}{2}=9$
6. Explain in detail the various components that make up a recording chain. What are the technical aspects and creative aspects that govern the quality of audio recording? $5\frac{1}{2}+4=9$

UNIT—IV

7. What are the different types of effects and dynamic signal processors? 9
8. Explain the various components present in a mixer channel with the help of a neat sketch. 9

8D—100/1812

4/E-83 (xi) (Syllabus-201

8D/1811

2018

(April)

MUSIC

(Elective)

(Advanced Theory of Western Music)

[MUS (E)-402]

Marks : 38

Time : 2 hours

The figures in the margin indicate full marks for the questions

Answer **one** question each from Units I and II
and **two** questions from Unit—III

UNIT—I

1. How are earlier trills written? Is there only one way of interpreting trills? At present what is the usual practice of writing trills? $4+4+4=12$
2. How are chords repeated in a bar? How are quaver groups repeated? How is a short passage be repeated? $4+4+4=12$

(Turn Over)

(2)

UNIT—II

3. What does $\frac{5}{3}$ in C scale mean and how is the chord constructed?

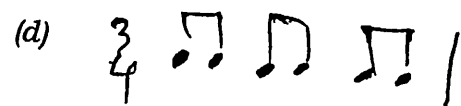
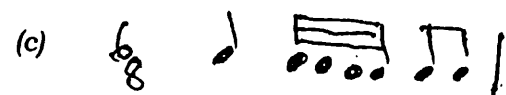
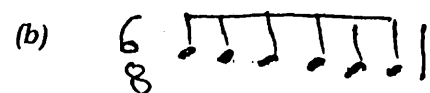
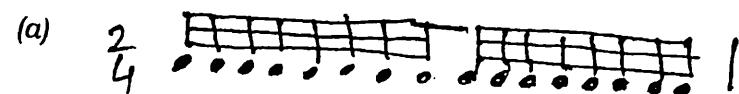
What does the figure bass $\frac{6}{3}$ indicate? Give appropriate examples.
 $4+4+4=12$

4. What is modulation? What is the importance of a tonic chord in the field of modulation? What is the role played by other chords?
 $4+4+4=12$

UNIT—III

5. Beam correctly the notes together (any five) :

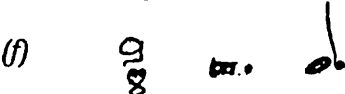
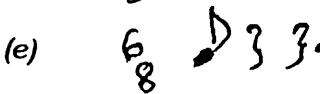
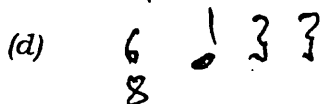
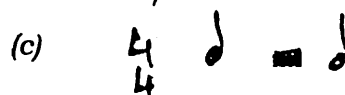
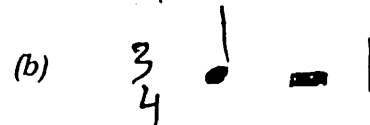
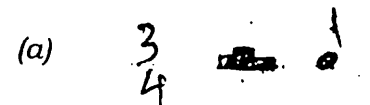
$1 \cdot 4 \times 5 = 7$



(3)

6. Add correct standard rest symbols (any five) :

$1 \cdot 4 \times 5 = 7$



7. Add time-signature to the following (any five) :

$1 \cdot 4 \times 5 = 7$

